

POLE  
P215859

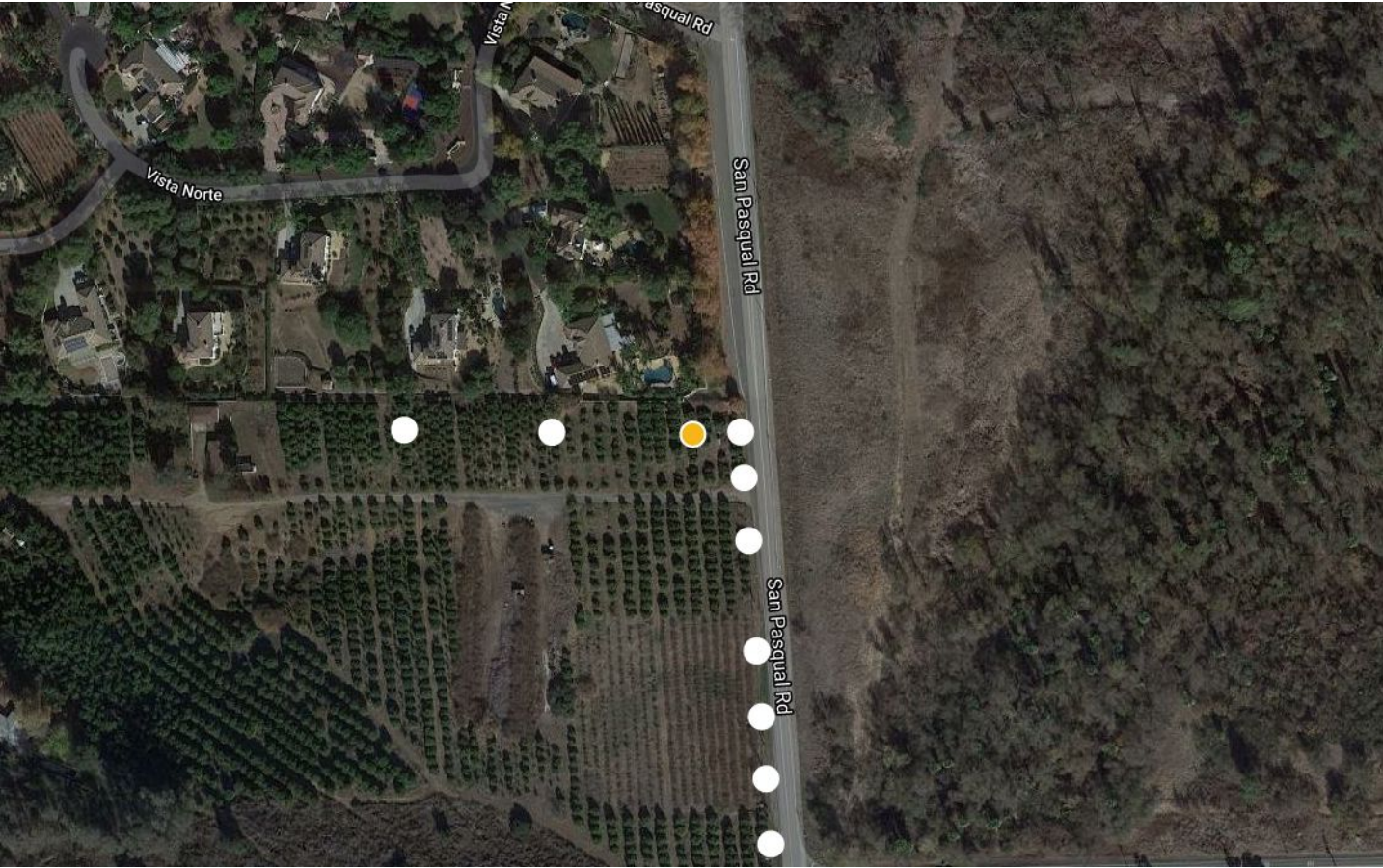
APPROVED  
28 Dec 2021

[VIEW ORDER](#)

[VIEW ASSET](#)

LOCATION

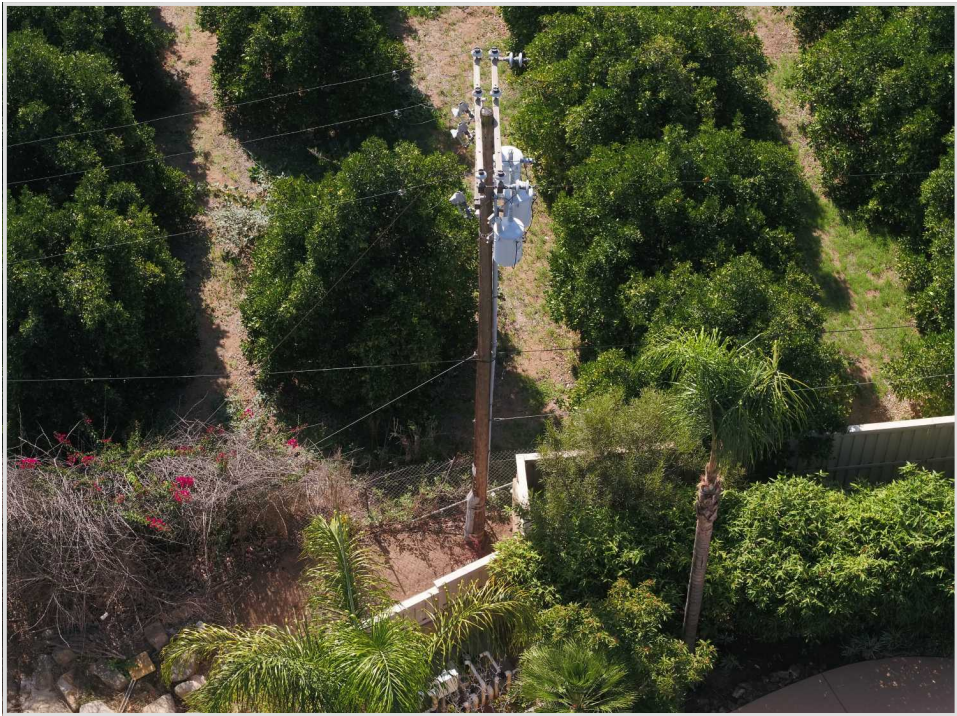
Latitude	33.0923554302	Longitude	-117.0208880049
----------	---------------	-----------	-----------------



ATTRIBUTES

Area	470
Material	WOOD

STRUCTURE





P215859

220 Buried anchor



DETAILS

Priority	Non-critical	Inspector	dbeckman@hilinenation.net
Date	9 Nov 2021	Party To Advise	Electrical Regional Operations

DESCRIPTION

Buried anchor